



**ERCOT Testimony to Senate Business
& Commerce Committee,
Chairman John Carona**

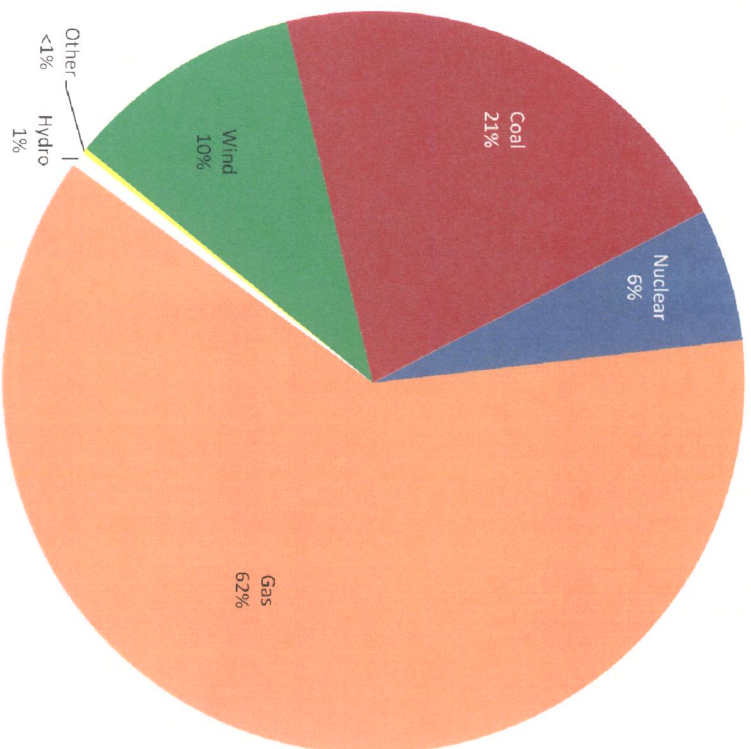
August 24, 2010

**Trip Doggett
President & CEO**



Reliability and Generation Adequacy

Installed Capacity – by Fuel



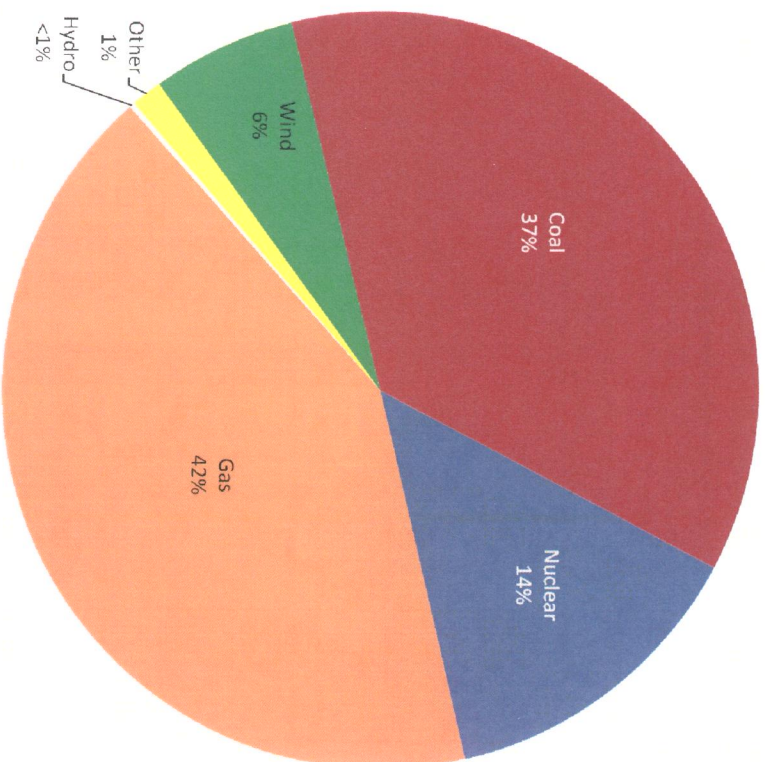
Example – Nuclear:

Installed Nuclear capacity = 5,091 MW

Total capacity = 81,626 MW

$5,091 / 81,626 = 6\%$

2009 Energy Actually Produced - by Fuel



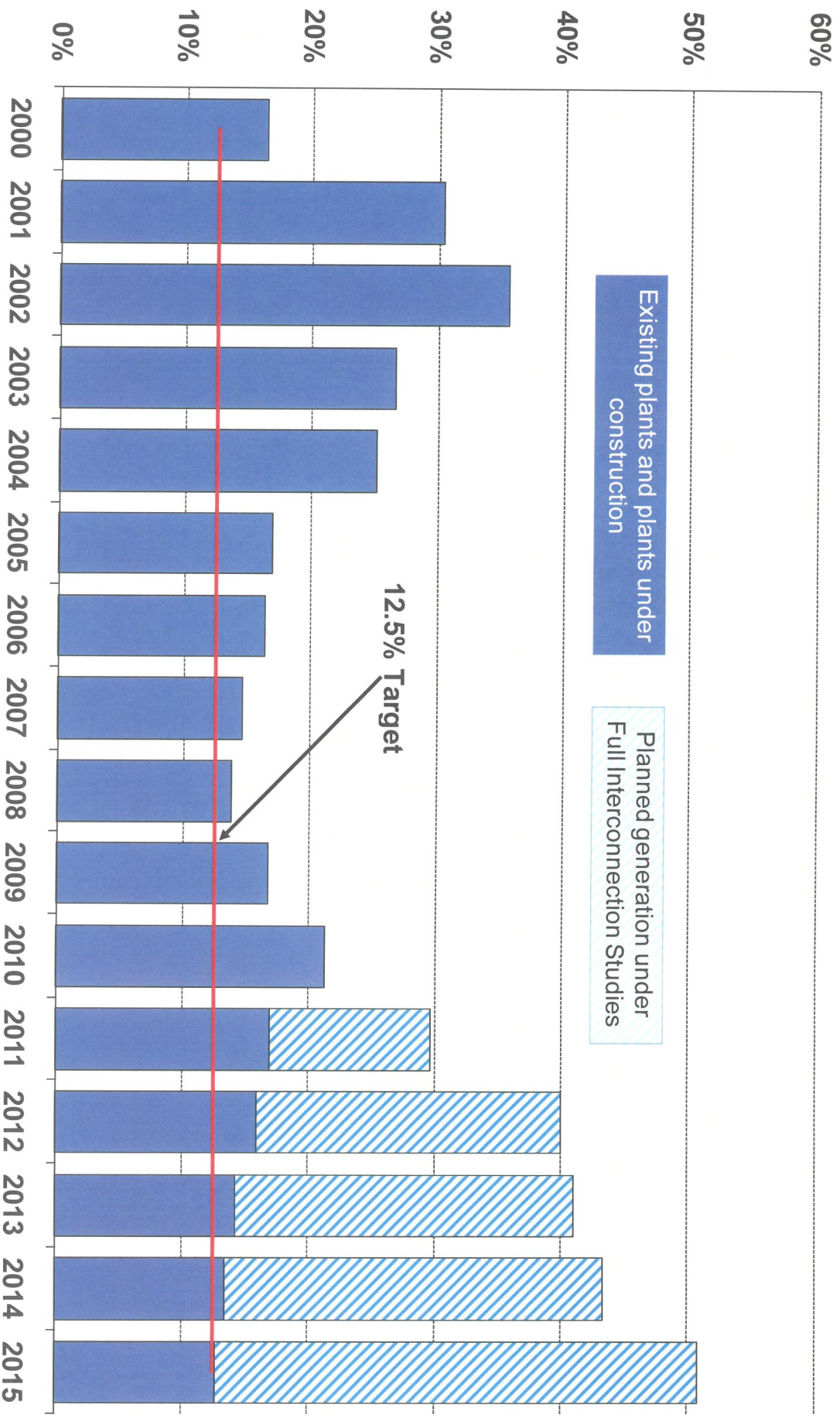
Example – Nuclear:

Nuclear energy produced in 2009 = 41,559,723 MWH

Total energy produced in 2009 = 305,432,222 MWH

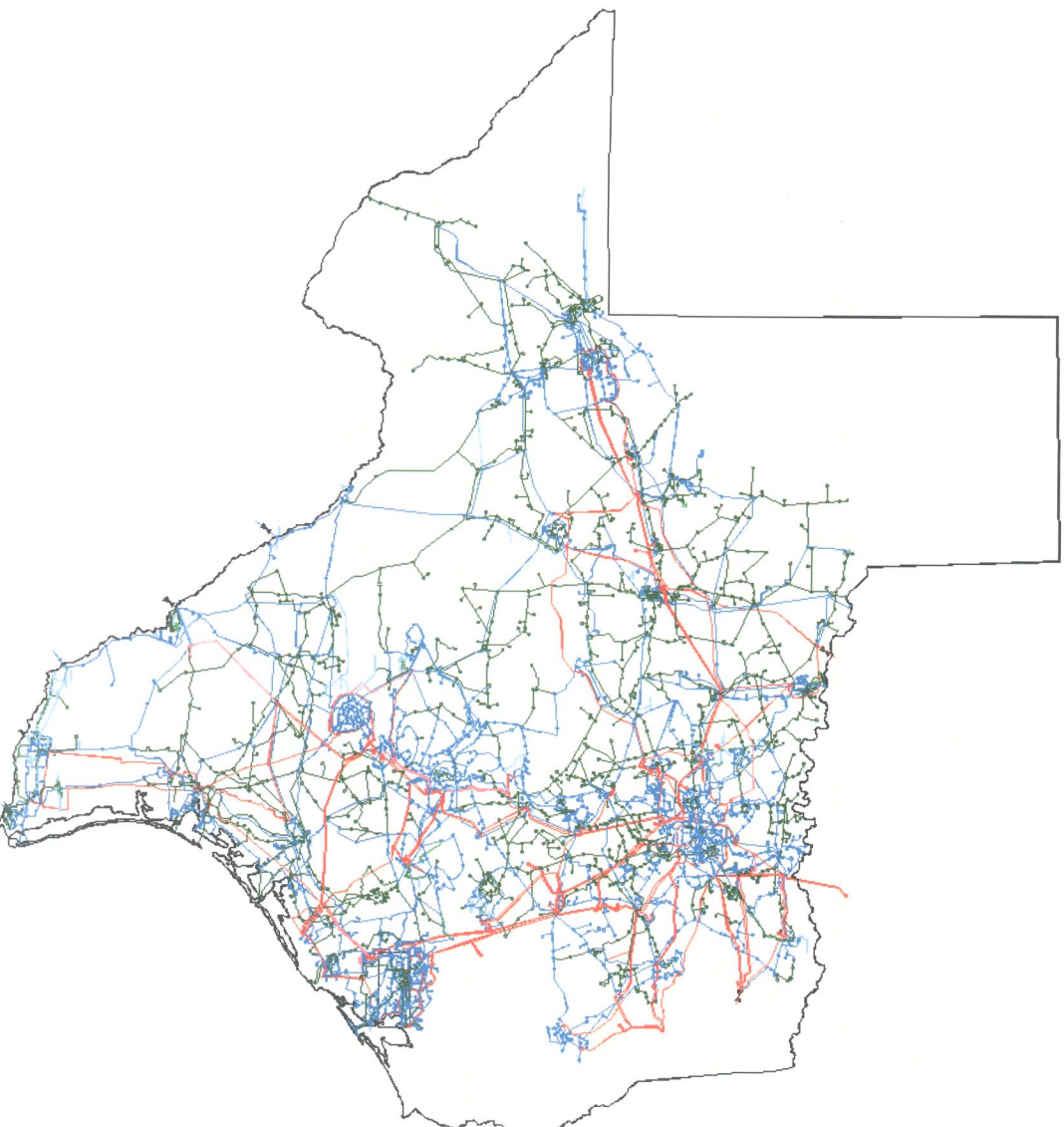
$$41,559,723 / 305,432,222 = 13.6\%$$

Reserve Margins for Years 2000 through 2015



The ERCOT Transmission Grid

There are 40,327 Miles of Transmission Lines in Texas...



8,917 Miles of 345kV Lines

19,748 Miles of 138kV Lines

6,593 circuit miles of
transmission built since
1999

5,729 circuit miles of
transmission under study

\$4.4 b investment in
transmission placed in
service since 1999

\$8.2 b under development
(including CREZ
transmission)