

Senate Committee on Government Organization
May 12, 2010
Interim Charge 2

Professor Sherri Greenberg
LBJ School of Public Affairs

Online services provided by the State of Texas compared to other states

Strengths of Texas

- Texas was an early entrant in online government
- Texas provides a wealth of online information
- Texas provides numerous online services
- Texas has been commended for its breadth of online services & information

Weaknesses of Texas

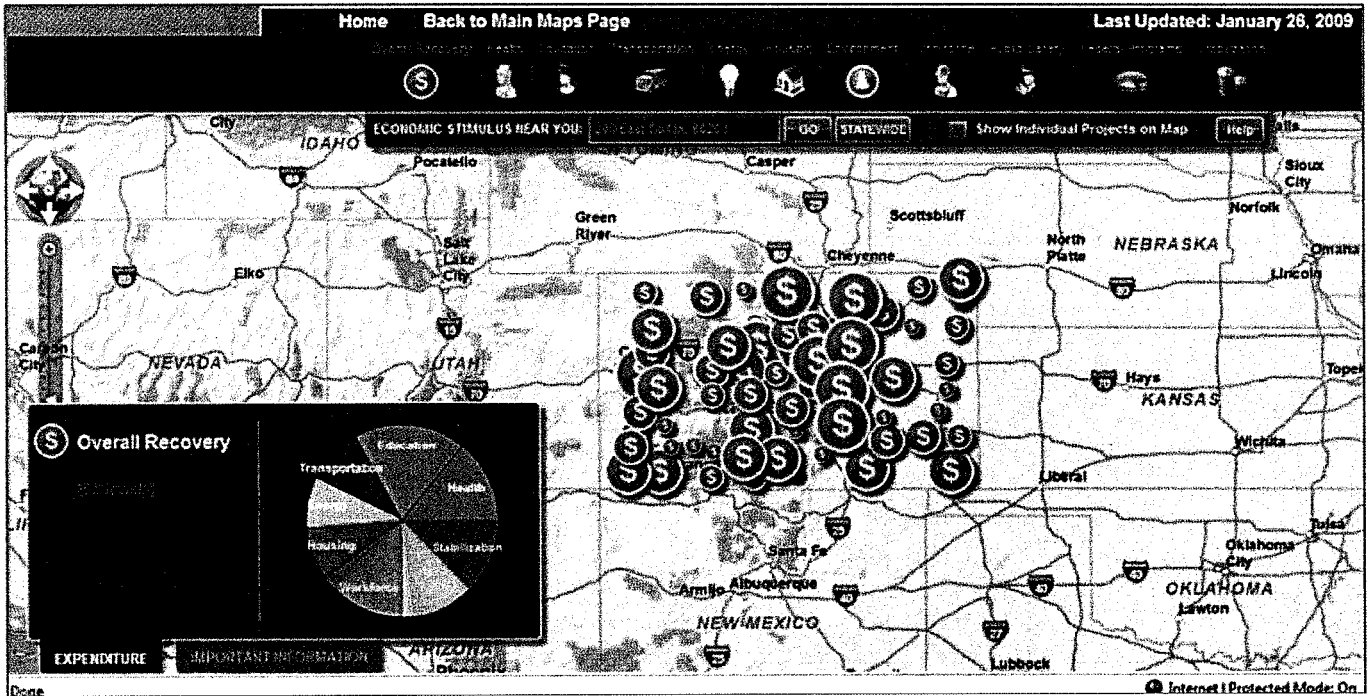
- Since Texas was an early entrant in online government, it has some outdated methods and websites
- An example of an outdated website is the LBB website which displays lists on the homepage and is visually difficult to decipher
- An example of outdated methods is the State's lack of GIS, visualization, raw data, and Web 2.0 features such as YouTube
- Due to the decentralized nature of Texas government, the State's websites lack a uniform look and feel

Models from Other States

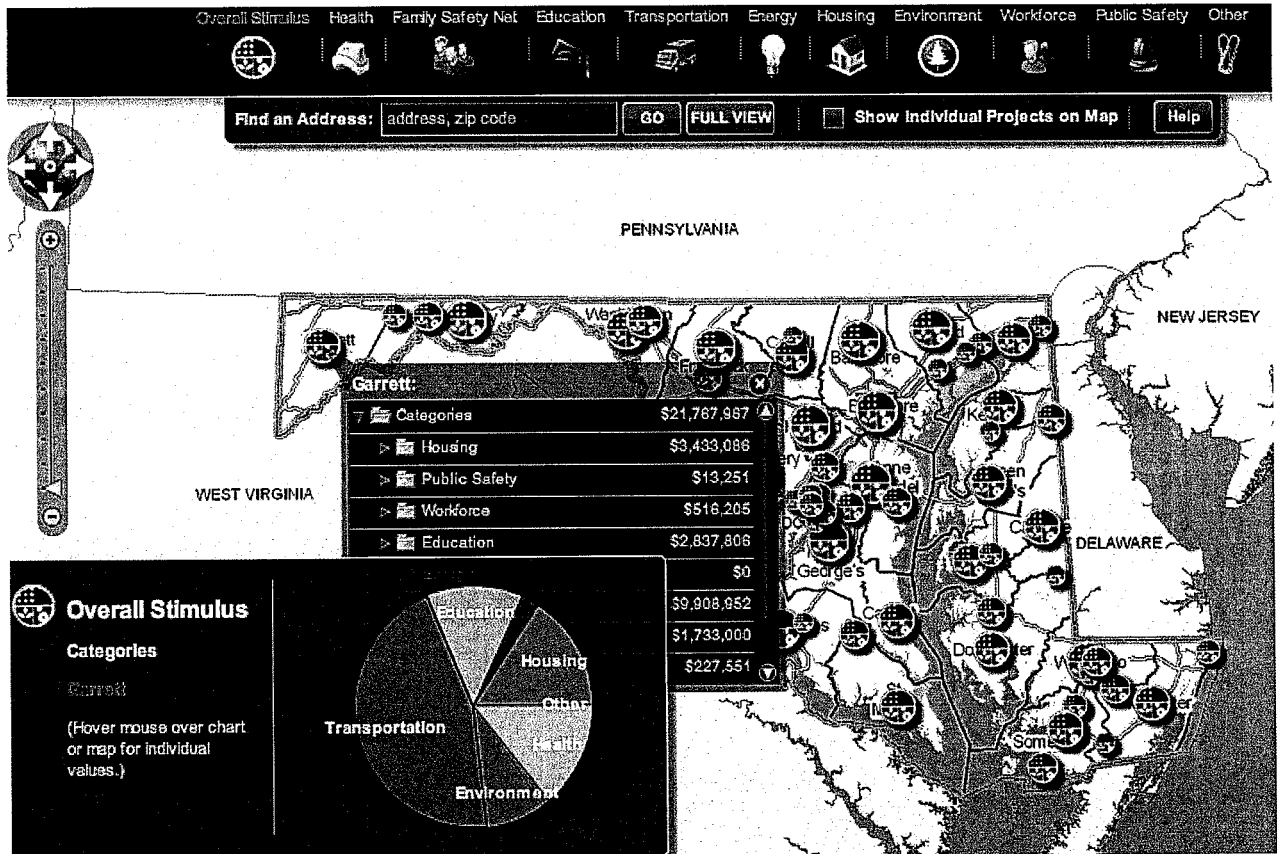
- Utah: Budget <http://www.governor.utah.gov/budget/default.html>
- Utah: GIS <http://gis.utah.gov/>
- Kentucky: Finances <http://opendoor.ky.gov/Pages/default.aspx>
- North Carolina: Budget
<http://www.osbm.state.nc.us/ncosbm/budget/budgeting101.shtm>
- Alabama: <http://open.alabama.gov/Finances>
- Virginia: Contracts <http://www.vita.virginia.gov/procurement/contracts.cfm>
- Missouri: Accountability <http://mapyourtaxes.mo.gov/MAP/Portal/Default.aspx>
- California: Drivers' Education on YouTube
<http://www.youtube.com/user/californiadmv>
- Colorado: Stimulus Mapping
<http://www.colorado.gov/cs/Satellite?c=Page&childpagename=OIT-2%2FOIT2Layout&cid=1251566970483&pagename=OIT2Wrapper>
- Maryland: Stimulus Mapping <http://mdimap.towson.edu/statestat/>
- Oklahoma: Portal Homepage <http://mdimap.towson.edu/statestat>

Stimulus mapping by county

COLORADO



MARYLAND



"One-Stop-Shop" Financial Information

ALABAMA

Open.alabama.gov
Transparency & Accountability in State Government

"We are running the most open, honest, and accountable administration in Alabama's history."
Governor Bob Riley

Home | Governor's Website | SMART Business Systems | Stimulus

- State Spending
- Plans & Performance
- Ethics
- Meetings & Campaign Finance
- Community Colleges
- Governor's Office Spending
- Contracts
- Leases

53.36	76.64	654.70	830.38	224.00
120.36	35.00	791.00	941.18	977.55
114.38	43.89	800.00	40.76	1251.99
190.85	28.99	34.65	335.29	1120.78
138.07	67.35	285.00	145.75	700.00
115.55	38.20	123.89	92.88	79.88
168.96	81.30	78.95	87.90	
119.10	18.69	15.60	27.31	735.44
183.98	15.60	87.90	50.46	528.96
102.08			88.87	
84.59			40.60	
			50.63	
			21.58	
62.14				
145.41				
132.68				

Checkbook

Our checkbook contains a searchable database of unaudited expenditures by category, payee and agency. The searchable database allows searching and drill down capability. You can view the results online, or download the data as a report or Excel spreadsheet. The searchable database is updated nightly Tuesday through Saturday.

Please note that our checkbook is sorted by payment fiscal year which shows payments made from October 1 to September 30.

- Search by Category
- Search by Payee
- Search by Agency

Category
Are you interested in searching our checkbook for expenditures based on type of expense? Begin your search by category.

Open, Honest, and Accountable

53.36	76.64	654.70	830.38	224.00
120.36	35.00	791.00	941.18	977.55
114.38	43.89	800.00	40.76	1251.99
190.85	28.99	34.65	335.29	1120.78
138.07	67.35	285.00	145.75	700.00
115.55	38.20	123.89	92.88	79.88
168.96	81.30	78.95	87.90	
119.10	18.69	15.60	27.31	735.44
183.98	15.60	87.90	50.46	528.96
102.08			88.87	
84.59			40.60	
			50.63	
			21.58	
62.14				
145.41				
132.68				

Search OpenBooks

How To Use
OpenBooks

About OpenBooks

Citizen Education

Glossary

Links

Home



Oklahoma's Finances: Online and In Action

OPENBOOKS Oklahoma's Finances: Online & In Action

Introduction

View the State's Profile

What Others Say

Recovery/Stimulus
Information



[What are the top 10 state appropriations?](#)



[Where does the state spend its money?](#)

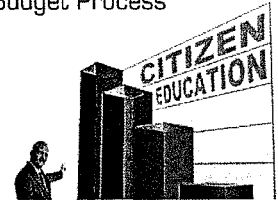


[What are the state's Spending Restrictions?](#)



[What is the Rainy Day Fund?](#)

Learn About Oklahoma's
Budget Process



Search OpenBooks

How To Use
OpenBooks

About OpenBooks

Citizen Education

Glossary

Links

Home



Oklahoma's Finances: Online and In Action / Browse

OPENBOOKS Oklahoma's Finances: Online & In Action

Search Financial Data by State Agency:

Children & Youth, Oklahoma Commission on - OCCY (127)

Go

-OR-

Search Financial Data by Function of Government:

Select Government Function

Go

Children & Youth, Oklahoma Commission on - OCCY (Social Services)

The information provided are payments made to vendors where the total fiscal year expenditures exceeded \$5,000 and are processed through OSF.

Information	Expenditures	Funding	Payroll	Vendors	P Card
Search by Vendor Name: <input type="text"/> <input type="button" value="Search"/>					
Vendor					Amount
<input type="checkbox"/> BMI SYSTEMS CORP					\$12,093.54
<input type="checkbox"/> COMPSOURCE OKLAHOMA					\$7,738.00
<input type="checkbox"/> COX BUSINESS SERVICES					\$6,443.67
<input type="checkbox"/> DELL MARKETING LP					\$11,776.66
<input type="checkbox"/> DEPARTMENT OF CENTRAL SERVICES					\$42,395.97
<input type="checkbox"/> IBM CORPORATION					\$8,777.02

City Data

SAN FRANCISCO, CALIFORNIA

City and County of **San Francisco**

Welcome

Major Newsroom Board of Supervisors City Agencies City Services

Find Information

Most Requested

City Services

Neighborhood Resources

Enter keyword GO

311
Access City Services
via the Phone, Twitter
and Web

Learn More

News Blog City receives \$46 Million in new Federal Stimulus Funding for Day ...

Social Media Center
Find the City beyond SFGOV

Government TV
Watch your City in Action

Opening City Data
Visit DataSF

Swine Flu
How to Protect Your Health

Internet | Protected Mode: On

DataSF beta

Register | Login

Datasets About Scorecard Contact Us App Showcase Blog Suggest Other Datasets @pac Search Go

Admin & Finance Environment Geography Housing Human Services Public Safety Public Works Transit RSS Feed Advanced Search

What is DataSF?

DataSF is a clearinghouse of datasets available from the City & County of San Francisco. Our goal in releasing this site is:

- (1) improve access to data
- (2) help our community create innovative apps
- (3) understand what datasets you'd like to see
- (4) get feedback on the quality of our datasets.

looking for a dataset or app that you'd like to see?

Datasets

Annual Salary Ordinance

Categorized under [Admin & Finance](#) Posted 62 days ago ([info](#))

Description: FTEs by Dept. for FY09-10
Agency Name: Department of Human Resources
Date Released: FY09-10
Time Period: FY09-10
Frequency: annual
Location of dataset: http://www.sfgov.org/site/uploads/files/sfdh/dept_services/RecruitmentResources/SFFTE.xls
Format: XLS

[Read More](#) | [Discuss](#) [Share This](#)

Annual Salary Ordinance

www.sfgov.org/site/uploads/files/sfdh/dept_services/RecruitmentResources/SFFTE.xls Internet | Protected Mode: On

International Data Example

UNITED KINGDOM

Unlocking innovation

Working with UK Public
Sector information and data



Advised by Sir Tim Berners-Lee and Professor Nigel Shadbolt and others, government is opening up data for reuse. This site seeks to give a way into the wealth of government data and is under constant development. We want to work with you to make it better.

We're very aware that there are more people like you outside of government who have the skills and abilities to make wonderful things out of public data. These are our first steps in building a collaborative relationship with you.

Latest news:

- further developments: accessibility & usability blog post
- enrolment for data.gov.uk community now open

Subscribe by RSS 

Community
Log in / Sign up

What is the Semantic Web?

Combining different data sources has never been easy but the Semantic Web will enable data to be joined easily across boundaries.

[Read more](#)

Home > Apps

Show us what you can do ...

[Submit your app](#)

Applications – extracting information from data

Here you will find applications that others have already created and submitted. You can view, comment on and rate all published applications.

It would be great if you could submit your applications and mashups so they can be shared back with the community.

[Submit your app](#)

RECENT APPS

[View all apps +](#)



MAGIC

MAGIC is a public facing website which



Best Care Home - Finding the care homes that care the most



ASBOrometer

ASBOrometer is a mobile application

Subscribe by RSS 

Community
Log in / Sign up

What is the Semantic Web?

Combining different data sources has never been easy but the Semantic Web will enable data to be joined easily across boundaries.

[Read more](#)