

**From:** [applications.administrator@capitol.local](mailto:applications.administrator@capitol.local)  
**To:** [Senate Redistricting](#)  
**Subject:** INETMAIL: Redistricting Public Input  
**Date:** Thursday, September 16, 2021 9:39:51 PM  
**Attachments:** [Petition for Harris County Precinct 685 and CD9 - Gayle Nesom 9-16-21.pdf](#)

---

Date: 2021-09-17  
First Name: Patricia Gayle  
Last Name: Nesom  
Title: N/A  
Organization: Harris County Democratic Party  
Address: [REDACTED]  
City: Houston  
State: TX  
Zipcode: 77074  
Phone: [REDACTED]

Affirm public info: I agree

Regarding: Congressional

Message:

I am submitting a redistricting petition that I first presented to the Texas Legislature on March 12, 2021. This request is for a minor adjustment to the border of Congressional District 9 so that Harris County Precinct 0685 moves from CD 9 to CD 7. This change is a prerequisite for Harris County Commissioners Court to consolidate the two precincts. The attached document contains maps, descriptions, reasons. I appreciate your attention to this matter.

Gayle Nesom  
Harris County Democratic Party  
Chair, Precinct 0008; Captain, Precinct 0685

[REDACTED]

# Redistricting Petition – Harris County Precinct 0685 in CD 9

First presented to the Texas Legislature March 12, 2021; document submitted online September 16, 2021

Submitted by Gayle Nesom (HC SD17)

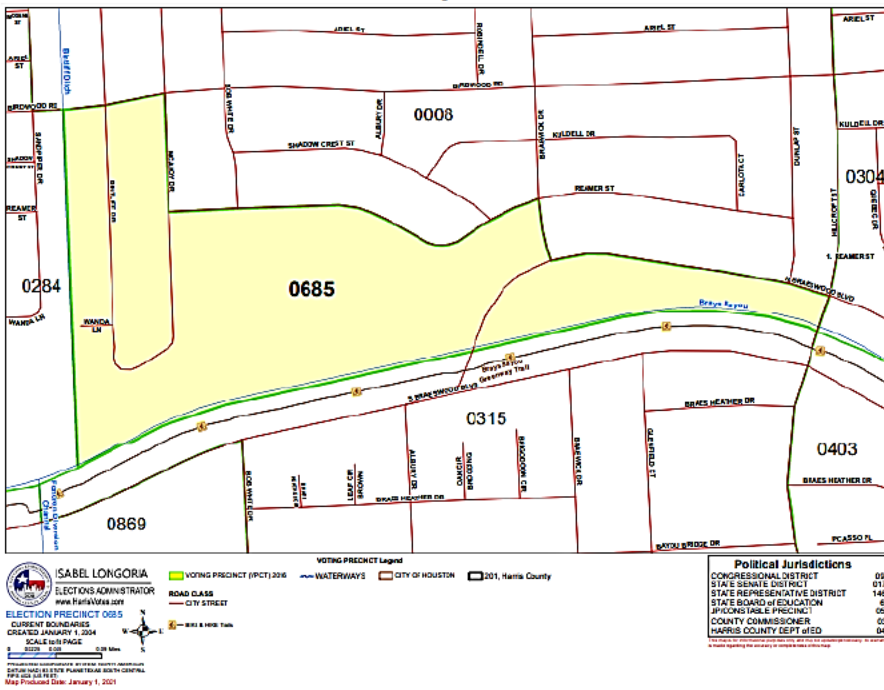
Harris County Democratic Party Precinct 0008 Chair; Precinct 0685 Captain

[REDACTED], Houston, TX 77074

## Petition To Texas Legislature

To adjust the border of one territorial voting district—Congressional District 9—in Harris County Precinct 0685.

### Harris County Precinct 0685



### Precincts 0685 and 0008



## Effects of this boundary adjustment on election results

Precinct 0685 is a very small fraction of the voter base of CD9 and would also be of CD7:

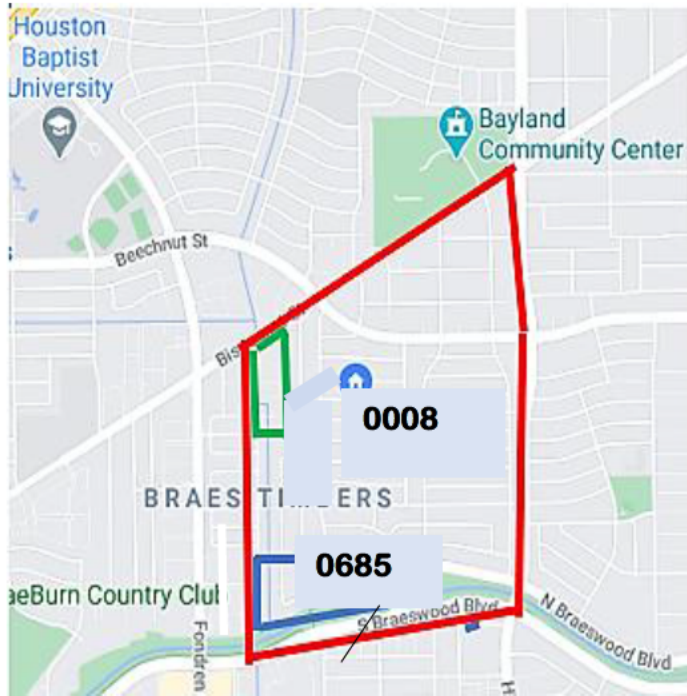
	Precinct 0685	CD9	CD7
Population (2019)	--	769,335	762,826
Registered Voters (2020)	230	229,107	311,335

CD 9 and CD7 are both led by Democrats: Al Green and Lizzie Fletcher. Precinct 0685 is almost equally divided between Democrats and Republicans: In the November 2020 election, 69 people in 0685 voted for Joe Biden and 63 voted for Donald Trump. Moving the precinct from CD9 to CD7 would result in a negligible partisan difference.

## What is the reason for this redistricting petition?

Making this logical congressional district change will make it possible to petition Harris County Commissioners Court to consolidate the two precincts, as shown by the area contained in the red trapezoid.

### Proposed consolidation of Precincts 0685 and 0008



## Who are the voters in Precinct 0685?

Precinct 0685 voters are residents of only 94 houses (one third of the Braes Timbers neighborhood), one side of one block (Reamer) and three five-family houses on North Braeswood in Robindell, a nursing home (Seven Acres), and an assisted living facility (The Medallion).

## How many residents are registered to vote?

The precinct has very few registered voters, and the number is shrinking:

November 2016: 285

November 2020: 230

August 2021: 184

Of the 184 registered voters:

Residents of single-family homes: 129\*

Residents of Seven Acres: 29

Residents of The Medallion: 26

*\*Any Democratic or Republican precinct chair would need to come from the 129 residents of these single-family homes; in my 5 years as captain of 0685—while trying to recruit a Democratic chair—not a single person has expressed interest.*

## How did they vote in the November 2020 election?

Only slightly more than half voted, and the vote was split fairly evenly between Republican and Democrat:

Total registered voters: 230

Total voter turnout: 132 (57.39%)

Voted for Trump: 63 / Voted for Biden: 69

## What Texas requirements must be met to consolidate precincts at the county level?

For two precincts to be consolidated by Harris County Commissioners Court, Texas code states that several territorial voting districts match.

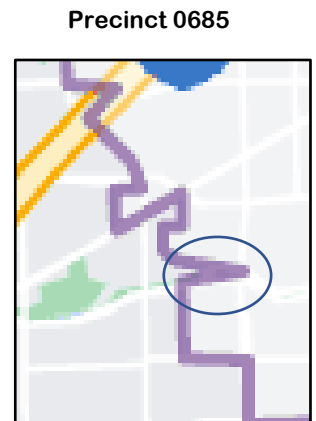
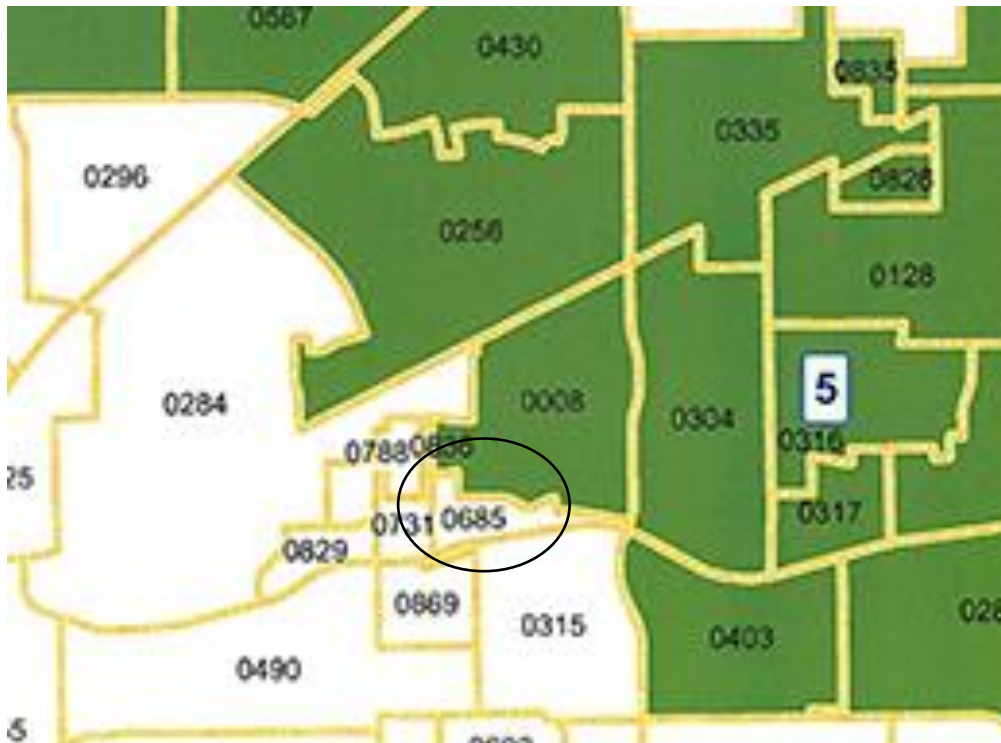
**(a) A county election precinct, including a consolidated precinct, may not contain territory from more than one of each of the following types of territorial units: .... (3) a congressional district...**

The only district of concern for Precinct 0685 is congressional district. Precincts 0685 and 0008 are in different districts:

0685 = CD 9: Al Green

0008 = CD 7: Lizzie Fletcher

### Congressional Districts 9 (white) and 7 (green)



## Why should these two precincts be consolidated?

Today I'm asking to move Precinct 0685 from CD 9 to CD 7 (that is, to adjust the boundary of CD 9) so that Precinct 0685 can be consolidated with Precinct 0008. Let me explain why.

### Population

Precinct 0685 is tiny and shrinking, in great part because of constant flooding. I'm not aware of the total population, but in five years, the number of registered voters has decreased from 285 in November 2016 to 184 in August 2021. Precinct 0008 has 1,776 registered voters and could easily absorb 184 voters.

**Sec. 42.006. POPULATION REQUIREMENTS. (a) Except as otherwise provided by this section, a county election precinct must contain at least 100 but not more than 5,000 registered voters.**

## Geography

Precincts 0685 and 0008 are contiguous, and both are compact: 0685 is a small triangle, and 0008 is a rectangle. The adjacent neighborhoods actually overlap if viewed from the perspective of Robindell and Braes Timbers, with a few streets of each being assigned illogically to the other precinct. Three multi-resident facilities are located on North Braeswood—north of Braes Bayou—a small apartment complex (in Precinct 0008) and two senior facilities (in Precinct 0685). Most of the area between Beechnut and Bissonnet is classified as light industrial (in Precinct 0008) but historically was part of Braeburn Terrace. At least 10 houses with registered voters remain, along with three small half-way residences with registered voters.

**Sec. 42.001. PRECINCTS ESTABLISHED BY COMMISSIONERS COURT. (a) Each commissioners court by order shall divide all the territory of the county into county election precincts in accordance with this subchapter. The precincts must be compact and contiguous.**

## Boundaries

Precincts 0685 and 0008 are located within a trapezoid-shaped area and are connected by the same artificial and natural boundaries:

Artificial: Bissonnet Street (north)

Artificial: Hillcroft Street (east)

Natural: Braes Bayou (south)

Natural: Bintliff Ditch, an inlet from Brays Bayou (west)

**Chapter 42. Election Precincts. Subchapter A. County Election Precincts. Sec. 42.003. Boundary Description. Each county election precinct must be described by natural or artificial boundaries or by survey lines.**

## Precinct 0685 (white) and Precinct 0008 (yellow)





## Cultural and historical background

I have lived in Robindell in Precinct 0008 for 35 years and have been Precinct 0008 chair and Precinct 0685 captain for more than 4 years. I know the neighborhoods and the precincts well. They have many shared features and concerns.

- They include three cohesive, overlapping neighborhoods bordered on the north and east by the same two streets, on the south by a major Houston waterway, Braes Bayou, and on the west by an inlet of the bayou.
- Residents of the multi-resident housing (senior facilities, apartment, halfway houses) are not assimilated socially into the three neighborhoods, but they fit geographically into our two precincts and no other.
- The neighborhoods—Braeburn Terrace, Robindell, and Braes Timbers—were developed mid-century. The houses are mostly small ranch-style single-family houses built from the mid-1950s through the 1970s.
- Residents are mostly middle class, mostly white and Hispanic, mostly nonimmigrant.
- Children are zoned to schools within the same Houston Independent School District.
- We share three neighborhood Facebook groups.
- We share a community pool, a garden club, a July 4th kids parade, and Neighbors' Night Out.
- We share nine intersections into and out of the three neighborhoods.
- Our main shared concern is Braes Bayou flooding, which damaged many of our houses during Hurricane Harvey and three other recent floods. In Precinct 0685, 100% of the houses flooded, as did both senior facilities.

## Shared concern with four precincts to the east

Our neighborhoods were built several years before those in the four precincts to the east but we share the Hwy. 610 Loop and Braes Bayou inlet boundaries to the east and west and several of the same major features and issues: Braes Bayou flooding, the same through streets and bayou bridges, the same city bus lines limited shopping opportunities, and proximity to the Sharpstown and Meyerland neighborhoods, the City of Bellaire, Meyerland Plaza, and Bayland Community Center and Park.

## Six precincts west of Hwy 610 bordered on the south by Braes Bayou



## **Political representation**

Precinct 0685's voters are split almost equally between the Democratic and Republican parties. Precinct 0008 tends to vote Democratic but not always. Currently, the two precincts are led by Democratic congresspersons. But very importantly, other than having different congresspersons, our two precincts share exactly the same representatives:

- State Senator: Joan Huffman (R)
- State Legislator: Shawn Thierry (D)
- State Board of Education Trustee: Will Hickman (R)
- County Commissioner: Tom Ramsey (R)
- City Council Person: Abbie Kamin (D)
- Harris County Constable: Ted Heap
- Justices of the Peace
  - Pos. 1: Russ Ridgway
  - Pos. 2: Jeff Williams

## **In conclusion**

With our shared geography and boundaries, history, aligned interests and concerns, and political representation, there is no reason that our neighborhoods—these two precincts—should be represented by different members of Congress, which is the only issue keeping Precincts 0685 and 0008 from being consolidated by Harris County Commissioners Court.

I hope you'll agree to adjust the boundary between CD 9 and CD 7 so that Precinct 0685 moves from CD 9 to CD 7 and can be consolidated later with Precinct 0008.

Thank you!

Gayle Nesom

